



GOLFE DE SAINT-TROPEZ



The information contained in this guide was communicated by Grimaud's service providers. If you encounter any changes or inaccuracies, please inform the Tourist Office.

# SUMMARY

- **Your Grimaud Tourist office** ..... 4
- **Emergency numbers**..... 7
- **Practical informations** ..... 8
- **Accessible parking places and maps of Grimaud** .. 10
- **Getting around** ..... 15
- **Accessible beaches** ..... 16
- **Sports and leisure activities** ..... 17
- **Markets** ..... 22
- **Regional produce and handicrafts** ..... 23
- **Restaurants - Snacks** ..... 24
- **Hotels**..... 31
- **Tourist Residences** ..... 33
- **Campsites** ..... 34

**Get even more information on accessibility in the Gulf of Saint-Tropez region on our website:**  
**[www.visit-grimaud.com.uk](http://www.visit-grimaud.com.uk)**  
**under the headings « Practical » > Accessibility.**

The historic trail of Grimaud village proposed on the map distributed by your Tourist Office is suitable for People with Reduced Mobility, but the presence of an accompanying person is strongly advised as the village is gently sloping.

For your comfort, we have also listed in red on the following plans, the presence of steps in the village as well as suitable parking spaces.

Grimaud Tourist Office wishes you a wonderful visit!





**The Tourist Office of Grimaud village  
welcomes you throughout the year,  
as well as the Tourist Office of Port Grimaud  
from April to September at the following times:**

- **From 1<sup>st</sup> October to 31<sup>st</sup> March:**  
Open from Monday to Saturday from 9 a.m. to 12:30 p.m.  
and from 2 p.m. to 5:30 p.m.
- **From 1<sup>st</sup> April to 30<sup>th</sup> June and in September:**  
Open from Monday to Saturday from 9 a.m. to 12:30 p.m.  
and from 2:30 p.m. to 6 p.m.
- **In July and August:**  
Open daily from 9:30 a.m. to 12:30 p.m. and from 2:30 p.m.  
to 6:30 p.m.

The two reception desks are fully accessible to people with disabilities. They have also acquired the Var Accessible Departmental Qualification to be able to welcome you in the best conditions.



# Grimaud Village Tourist Office

📍 679 Route Nationale

☎ +33 4 94 55 43 83 • ✉ [info@grimaud-provence.com](mailto:info@grimaud-provence.com)

💻 [www.grimaud-provence.com](http://www.grimaud-provence.com)

- ➡ Specific spaces available at level - 1 of the underground car park of the Terrasses de Grimaud, with a lift providing access to the village near the Tourist Office.
- ➡ Parking drop-off - possibility to park for 15 minutes - in front of the Tourist Office.
- ➡ Doorbell at the entrance allowing staff to open the door if the person needs.
- ➡ Reception desks and documentation display stands.
- ➡ Trained and sensitive staff.
- ➡ Hearing loop available to people with hearing loss and/or hearing aids.
- ➡ Installation of pictograms in reception areas, allowing a simplified choice of the available documentation.
- ➡ Specific manoeuvring space for PRM\* of 150 cm in reception areas.
- ➡ Design of a brochure relating the accessible service providers in the commune.
- ➡ Public toilets adapted for PRM\* near the Tourist Office.
- ➡ Lift leading from the Tourist Office to the heart of the village.

## Port Grimaud Tourist Office

📍 Les Terrasses de Port Grimaud - Rue de l'Amarrage

☎ +33 4 94 55 43 83 • 📧 [info@grimaud-provence.com](mailto:info@grimaud-provence.com)

- ➡ Parking spaces reserved for PRM\* in the underground and outdoor car park of the Terrasses de Port Grimaud located close to the Tourist Office.
- ➡ Access ramp allowing easy access to the building, automatic sliding entrance > 77 cm wide.
- ➡ Reception desks and documentation display stands
- ➡ Specific manoeuvring space for PRM of 150 cm in reception areas.
- ➡ Trained and sensitive staff
- ➡ Hearing loop available to people with hearing loss and/or hearing aids.
- ➡ Installation of photos and pictograms in reception areas, allowing a simplified choice of the available documentation.
- ➡ Public toilets adapted for PRM behind the Tourist Office
- ➡ Accessibility guide on request
- ➡ Design of a brochure relating the accessible service providers in the commune.

### \* **Person with Reduced Mobility:**

The concept of PRM is broad. To give a definition, we can say that a PRM is: "any person who is hindered in their movements because of their size, condition, age, permanent or temporary disability and because of the equipment or instruments they must use to get around. Several factors can decrease the ease of movement: blindness, deafness, pregnancy, accident, or simply the use of a shopping cart, pram, parcels, luggage, etc."

# Emergency numbers



## **Fire brigade**

☎ 112 / ☎ 18

## **Clinique du Golfe de Saint-Tropez**

☎ + 33 4 98 12 70 00

## **Hospital**

☎ + 33 4 98 12 50 00

## **Police emergency services**

☎ 17

## **Gendarmerie (Police station)**

☎ + 33 4 98 12 68 80

## **Doctor surgery**

☎ + 33 4 94 56 25 33

## **Pharmacy of Grimaud Village**

📍 Les Terrasses de Grimaud - RD 558 - 14 Route Nationale

📅 From Monday to Saturday from 9 a.m. to 12:30 p.m. and from 2:30 p.m. to 6 p.m.

☎ + 33 4 94 43 37 58

## **Pharmacie of Port Grimaud**

📍 14 Place du Marché

📅 Summer: Monday to Saturday: 9 a.m. - 10 p.m., Sunday: 9 a.m. - 1 p.m. and 5 p.m. - 7 p.m. • Winter: Monday to Saturday: 9 a.m. - 12:30 p.m. and 3 p.m. - 7 p.m.

☎ +33 4 94 56 39 05

# Practical informations



## **Mairie de Grimaud (Townhall)**

📍 Rue de la Mairie

☎ +33 4 94 55 69 00

💻 [www.mairie-grimaud.fr](http://www.mairie-grimaud.fr)

➡ 1 reserved parking space for PRM opposite Grimaud Town Hall.

## **Office de Tourisme de Grimaud**

📍 679 Route Nationale

☎ +33 4 94 55 43 83 • ✉ [info@grimaud-provence.com](mailto:info@grimaud-provence.com)

💻 [www.grimaud-provence.com](http://www.grimaud-provence.com)

➡ Underground car park opposite the Tourist Office with 3 spaces reserved for PRM and a lift.

Paid parking from April to October, free the rest of the year. Free for PRM with a reduced mobility sticker on the windscreen.

➡ 2 reserved parking spaces for PRM above the Tourist Office, on the Place Neuve.

## **Office de Tourisme de Port Grimaud**

📍 Rue de l'Amarrage, Port Grimaud Sud

☎ +33 4 94 55 43 83 • ✉ [info@grimaud-provence.com](mailto:info@grimaud-provence.com)

💻 [www.grimaud-provence.com](http://www.grimaud-provence.com)

➡ 1 reserved parking space for PRM beside the Tourist Office.

➡ Les Terrasses de Port Grimaud car park: paid parking from April to October (free for only 30 minutes), free the rest of the year. 7 reserved parking spaces for PRM, free with a reduced mobility sticker on the windscreen.



## **Administration Port Grimaud 1**

📍 Maison commune - Place de l'Eglise

☎ +33 4 94 56 27 48 • ✉ [administration@port-grimaud.fr](mailto:administration@port-grimaud.fr)

🌐 [www.port-grimaud.fr](http://www.port-grimaud.fr)

➡ Avenue de la Mer: 3 reserved parking spaces for PRM.

## **Village hall – Beausoleil building**

📍 850 Route Nationale

✉ [beausoleilgrimaud@gmail.com](mailto:beausoleilgrimaud@gmail.com)

➡ Easy access and path at street level. 4 reserved parking spaces for PRM nearby.

## **Post Office**

📍 1 Boulevard des Aliziers

☎ 36 31

📅 Open year round

➡ reserved parking space for PRM at street level in front of the premises. 1 reserved parking space for PRM opposite the Post Office.

# Accessible Parking Spaces



## Grimaud Village

- Pré-de-Foire (upper) ..... 1 space (H12)
- Chemin du Souvenir Français ..... 2 spaces (H12)
- Parking du Château..... 4 spaces (H12)
- Parking de l'aire des Fourches.....1 spaces (G 12)
- Boulevard des Aliziers (level of post office) .....1 spaces (H12)
- Place Neuve (lower part) .....2 spaces (H12)
- Rue des anciennes écoles ..... 1 spaces (H12-13)
- Les Terrasses de Grimaud (underground with lift) .. 3 spaces (H12)
- Below the Townhall ..... 1 space  
..... (H12)
- Rue des Migraniers..... 2 spaces (H12)
- Parking Place des Pénitents ..... 1 space (H11)
- Rue du Gacharel ..... 1 space (H12)
- Bâtiment Beausoleil ..... 1 space (H12)
- Route Nationale in front of Beausoleil building.....1 space (H13)
- Underground Parking - Beausoleil building (level -1)1 space (H13)
- Impasse des Vallons..... 2 space (H13)
- Impasse des Fées ..... 4 space (H13)

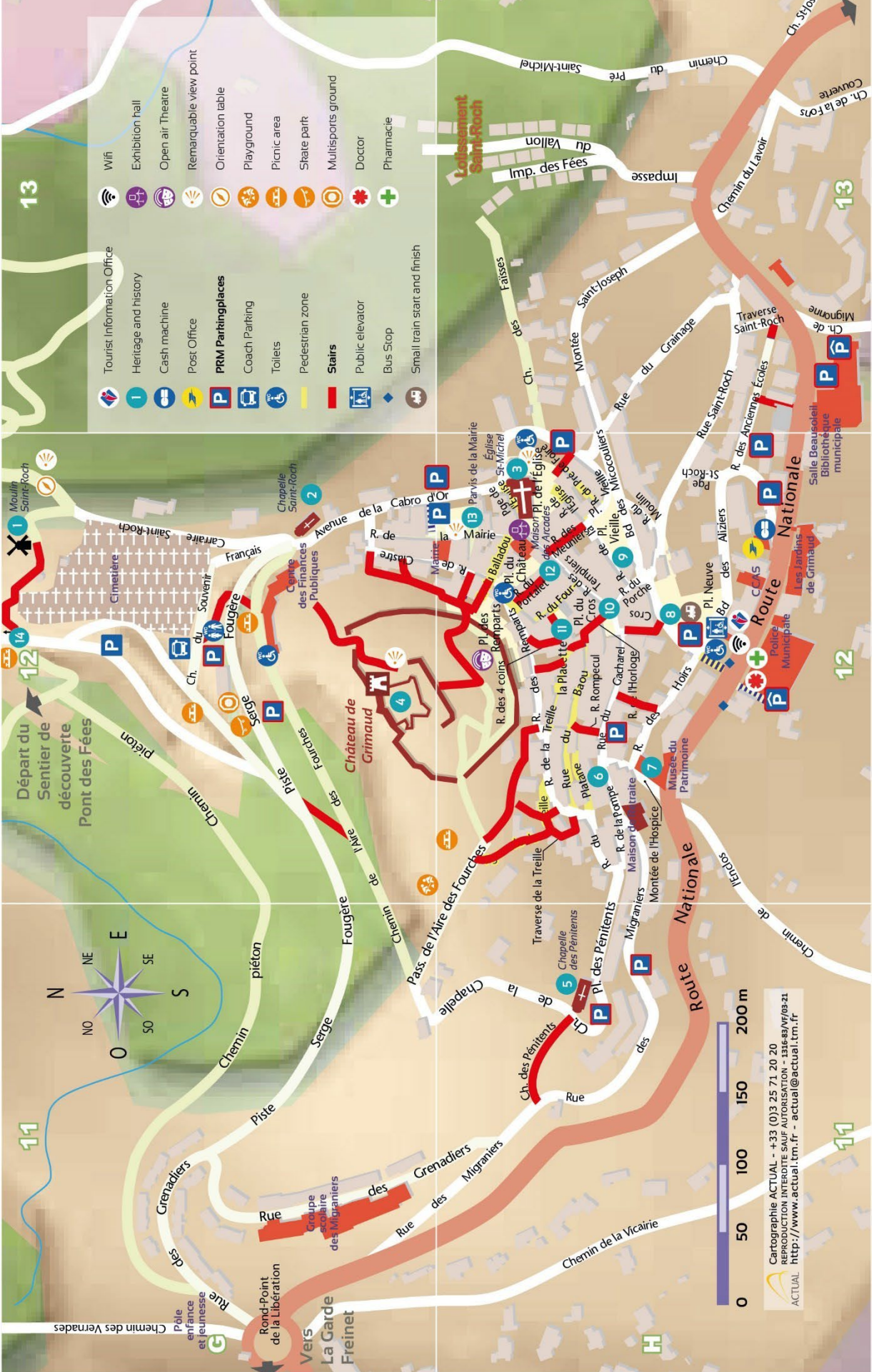
## **Port Grimaud**

- Outdoor car park of l'Amarrage..... 2 spaces (J14)
- Parking des Terrasses de Port Grimaud (outside) .4 spaces (K14)
- Parking des Terrasses de Port Grimaud (underground) ..3 spaces  
..... (K14)
- Port Grimaud Tourist Office ..... 1 space (K14)
- Avenue de la Mer .....3 spaces (I 15)

## **Commune of Grimaud**

- Relais de Saint-Pons-les-Mures car park ..... 2 spaces (D8)
- Blaquières Sports Complex car park ..... 5 spaces (D6)
- Gros Pin beach car park .....2 spaces (C9)

# MAP OF THE HISTORIC VILLAGE OF GRIMAUD



- Tourist Information Office
- Heritage and history
- Cash machine
- Post Office
- PRM Parkingplaces
- Coach Parking
- Toilets
- Pedestrian zone
- Stairs
- Public elevator
- Bus Stop
- Small train start and finish
- Wifi
- Exhibition hall
- Open air Theatre
- Remarkable view point
- Orientation table
- Playground
- Picnic area
- Skate park
- Multisports ground
- Doctor
- Pharmacie



0 50 100 150 200 m

Cartographie ACTUAL - +33 (0)3 25 71 20 20  
 REPRODUCTION INTERDITE SAUF AUTORISATION - 1316-83/MF/03-21  
 ACTUAL <http://www.actual.tm.fr> - [actual@actual.tm.fr](mailto:actual@actual.tm.fr)



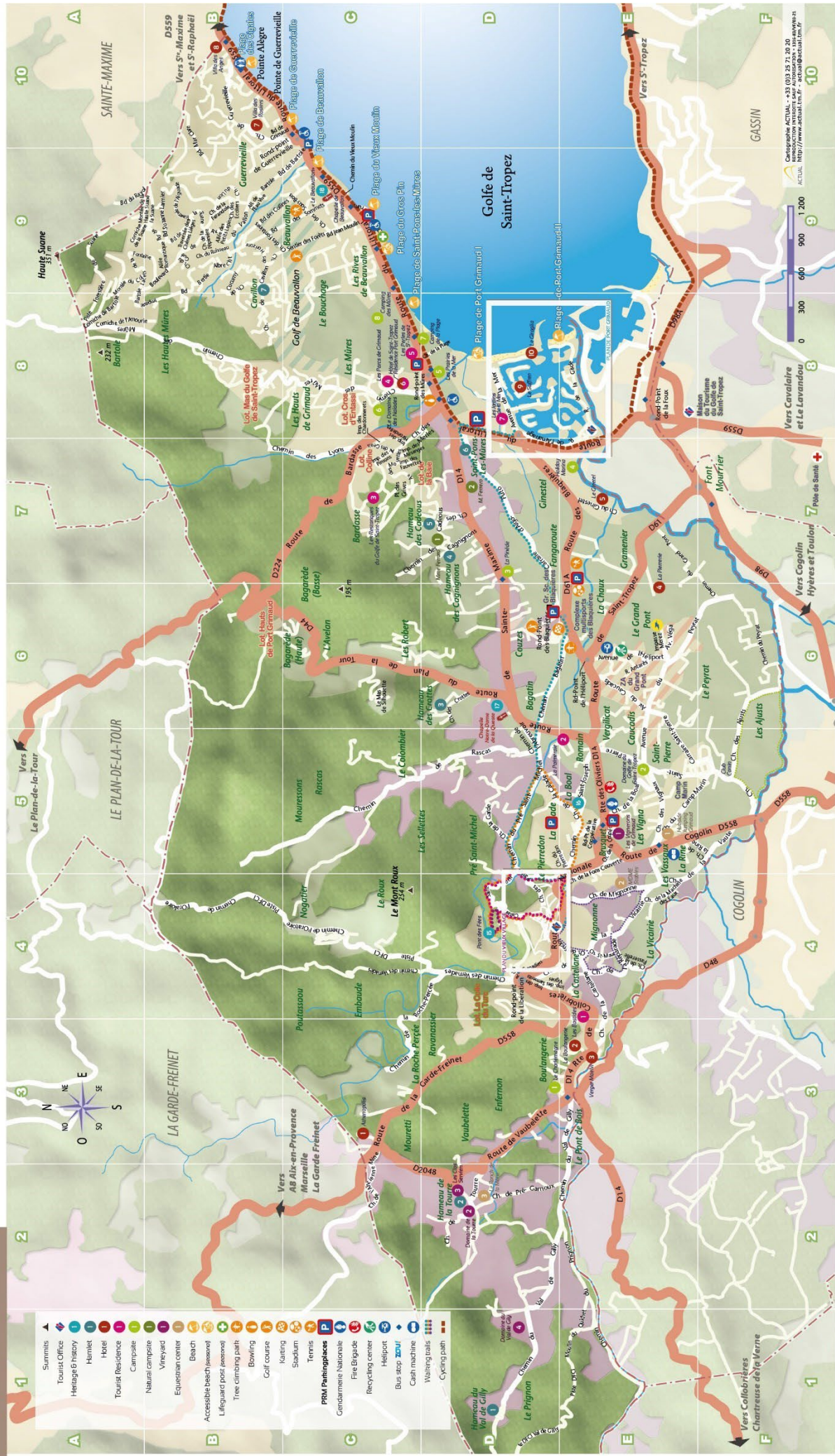
# MAP OF PORT GRIGNAUD



Cartographie ACTUAL - +33 (0)3 25 71 20 20  
 REPRODUCTION INTERDITE SAUF AUTORISATION - 1316-83/NF/05-21  
 ACTUAL <http://www.actual.tm.fr> - [actual@actual.tm.fr](mailto:actual@actual.tm.fr)



# GRIMAUD GENERAL MAP



- ▲ Summits
- 🏠 Tourist Office
- 🏛️ Heritage & History
- 🏠 Hotel
- 🏠 Tourist Residence
- 🏠 Campsite
- 🌿 Natural composite
- 🍷 Vineyard
- 🐎 Equestrian center
- 🏖️ Beach
- 👮 Accessible beach/lifeguard
- 🌳 Tree climbing path
- 🎯 Bowling
- 🏌️ Golf course
- 🛼 Skating
- ⚽ Stadium
- 🎾 Tennis
- 🅇 P Parking
- 🚔 Gendarmerie Nationale
- 🚒 Fire Brigade
- ♻️ Recycling center
- 🚁 Heliport
- 🚌 Bus stop
- 🏧 Cash machine
- 🚶 Waiting trails
- 🚲 Cycling path

Cartographie ACTUAL - +33 (0)3 25 71 20 20  
 INTRODUCTION INFORMATIQUE - 1998  
 ACTUAL - 1997 / 2000



# Getting around



## Réseau ZOU! - Transport Bus

☎ +33 4 86 88 50 50

➡ To travel on the ZOU! buses, you must first make a reservation no later than 36 hours before your departure with the ZOU! customer service to make sure you will be supported in the best possible conditions.

## Port Grimaud Taxi Station

📍 Avenue de la Mer - Port Grimaud 1

☎ +33 4 94 56 23 41

➡ People in wheelchairs can only be transported if the wheelchair is foldable.

## Les Bateaux Verts

📍 14, Quai Léon Condroyer, Sainte-Maxime

☎ +33 4 94 49 29 39 • 📧 [info@bateauxverts.com](mailto:info@bateauxverts.com)

💻 [www.bateauxverts.com](http://www.bateauxverts.com)

📍 Sea shuttle

➡ Boats are accessible independently. Port Grimaud Pier is accessible with help. Toilets adapted to PRM standards on the Avenue de la Mer in Port Grimaud.

# Accessible beaches for PRM with the HANDIPLAGE label



## **Port Grimaud 1 Beach**

At the end of the Avenue de la Mer.

- ➔ PRM-reserved parking spaces are available along the Avenue de la Mer, free with reduced mobility sticker on the windscreen, otherwise there is a fee for these parking spaces from April to the end of October.
- ➔ Paid public toilets, PRM-reserved parking spaces available along the Avenue de la Mer.
- ➔ An amphibious wheelchair is available at the Base Nautique (water sports centre) from mid-May to mid-September with beach access mats. A water access ramp is also available.

## **Gros Pin Beach**

- ➔ PRM-reserved parking spaces are available at the Gros Pin beach car park, free parking year-round.
- ➔ An amphibious wheelchair is available at the lifeguard station from mid-June to mid-September with beach access mats.
- ➔ Specific public toilets accessible to PRM, free at the beach entrance.



# Sports and leisure activities



## • Land-based leisure activities

### **Pep's Spirit**

📍 Quartier la Rine

☎ +33 6 22 72 69 36 / +33 6 38 45 80 14 • ✉ [fred@peps-spirit.fr](mailto:fred@peps-spirit.fr)

💻 [www.peps-spirit.fr](http://www.peps-spirit.fr)

📅 Open year round, closed in February. By reservation from 9 a.m. - 8 p.m.

📍 Outdoor sports specialist. Mountain biking, Nordic walking, sea kayaking, guided hikes, stays, seminars, Qualité Tourisme label

➡ Street-level shop, nearby car park with PRM parking spaces.

➡ Kayak-type activities are suitable for PRM in the company of a companion (family, guardian, etc.). It is advisable to contact the service provider to inform them of the person's degree of disability.

### **Club 88**

📍 980, avenue du Peyrat - Parc d'activités du Grand Pont

☎ +33 4 94 44 10 38 • ✉ [club88@live.fr](mailto:club88@live.fr)

💻 [www.club88.fr](http://www.club88.fr)

📅 Open year round. Monday – Friday: 8:30 a.m. - 9 p.m., Saturdays: 9 a.m. - 12 p.m.

📍 Fitness centre. "The Mills" programme. Cardio training. Sauna. 2 classrooms.

➡ This gym accepts and receives PRM as it is accessible on the ground floor. For the upper part of the gym, it is possible to access it but only with the physical help of the staff who can help PRM to access the upper part. Toilets adapted to standards, PRM parking space in front of the gym.

## **Crossfit Grimaud**

📍 209, avenue de Caucadis

☎ +33 6 29 54 16 06 • 📧 [adrienroux00@gmail.com](mailto:adrienroux00@gmail.com)

📍 Fitness room: gym, weightlifting, cardio, intensity, mobility, strength, friendliness, good humour, mutual aid, sharing, laughter – everything you need to be healthier!!

➡ Obstacle-free level floor and wheelchair accessible, doors  $\geq 77$  cm wide, toilet + support bar + space to move.

## **Golf Club de Beauvallon**

📍 Domaine de Beauvallon - Boulevard des Collines

☎ +33 4 94 96 16 98 • 📧 [golfdebeauvallon@wanadoo.fr](mailto:golfdebeauvallon@wanadoo.fr)

📍 The Beauvallon Golf Club, established in 1923, covers 40 hectares. It offers a varied, natural, remarkably well-maintained 18-hole course.

This golf course offers stunning views of the Mediterranean Sea and the Gulf of St Tropez.

➡ Reserved parking space 330 cm wide  $< 20$  m from the site, obstacle-free level floor and wheelchair accessible, wide doors  $\geq 77$  cm, reception desk between 70 and 80 cm high, PRM-friendly toilet without steps + support bar + space to move.

## **Golf Up**

📍 39 Carraire d'Aïgo Puto - Route des Blaquières

☎ +33 4 94 43 08 08 • 📧 [accueil@golfup.fr](mailto:accueil@golfup.fr)

📍 Golf is fun and accessible to all! Check out GOLF UP, a golf and leisure area, located in Grimaud and open daily all week.

Interactive challenges from €6, golf course open to all (1h30), restaurant, bar and lounge. Beginners - pros welcome.

➡ Reserved parking space for PRM 330 cm wide  $< 20$  m from the place, obstacle-free level floor and wheelchair accessible, doors  $\geq 77$  cm wide, reception desk between 70 and 80 cm high, Height under table  $\geq 70$  cm, width  $> 77$  cm, absence of steps to access the place, toilet + support bar + space to move, fully accessible site and building.



## **Grimaud Karting Loisir**

📍 37 Carraire d'Aïgo Puto - Route des Blaquières

☎ +33 4 94 56 00 12 • 📧 [grimaudkarting.loisir@orange.fr](mailto:grimaudkarting.loisir@orange.fr)

💻 [www.gkl-karting.com](http://www.gkl-karting.com)

📅 Open year round

📍 Outdoor karting circuit approved in both directions of traffic, karts for children and adults, two-seater from 4 years old, Handikart (hand-controlled karts), pasta bar, bar, etc.

➡ Grimaud go-karting has two-seater karts for safe accompanied laps on the racetrack and even a Handikart (hand-controlled karts, minimum 14 years) for PRM, specific parking space in front of the go-karting.

## **Le Petit Train de Grimaud**

📍 Avenue de la Mer (Port Grimaud) et Place Neuve (Centre du Village)

☎ 06 62 07 65 09 • 📧 [grimaud@lespetitstrainsdugolfe.com](mailto:grimaud@lespetitstrainsdugolfe.com)

💻 [www.petit-train-grimaud.fr](http://www.petit-train-grimaud.fr)

📅 Open year round

➡ For wheelchair users, book 48 hours in advance with the service provider.

## **Médiathèque de Grimaud**

📍 Immeuble Beausoleil 850 Route Nationale

☎ 04 94 43 29 02 • 📧 [mediatheque@mairie-grimaud.frr](mailto:mediatheque@mairie-grimaud.frr)

📅 Ouvert à l'année.

➡ Access ramp to the media library.

## **• Maritime leisure activities**

### **Les Bateaux Verts**

📍 Place de l'Église – Port Grimaud 1

☎ +33 4 94 49 29 39 • 📧 [info@bateauxverts.com](mailto:info@bateauxverts.com)

📍 Regular shuttles to St Tropez from Port Grimaud and Port des Marines de Cogolin, Sainte-Maxime, Les Issambres.

➡ Boats are accessible independently.

➡ Port-Grimaud Pier, accessible with help. Toilets adapted to PRM standards on the Avenue de la Mer in Port Grimaud.

## Les Coches d'Eau

📍 Place du Marché - Port Grimaud

☎ +33 6 73 87 76 84 • ✉ [hpco@orange.fr](mailto:hpco@orange.fr)

💻 [www.hpco.fr](http://www.hpco.fr)

📅 Open from early April to late October. Daily from 10 a.m. to 9 p.m. in season, in autumn and spring from 10 a.m. to 6 p.m.

📍 Solar-powered boat tours in Port Grimaud.

➡ Les Coches d'Eau accept only 1 manual wheelchair per boat, the chair can be lowered via the small steps leading to the boat with the help of the team of Les Coches d'Eau.

- **Aerial leisure activities**

### **Helisécurité Helicopter Airline**

📍 Parc d'activités du Grand Pont

☎ +33 4 94 55 59 99 • ✉ [contact@helisecurite.fr](mailto:contact@helisecurite.fr)

💻 [www.helisecurite.fr](http://www.helisecurite.fr)

📅 Open year round from 9 a.m. to 6 p.m.

📍 Transport of passengers

➡ The heliport accepts and receives anyone with disabilities and takes care of them for their transport by helicopter. Access to the heliport is totally level and is therefore easy to access for PRM, parking spaces in the park of the heliport.

# Markets



## **Grimaud Market**

📍 Place de l'Église

📅 Every Thursday: 9 a.m. - 1 p.m.

➡ PRM specific parking spaces near the Place de l'Église [Cf. page 8]. Place de l'Église (church square) is accessible with the help of an accompanying person because the narrow streets of the village are gently sloping.

## **Port Grimaud Market**

📍 Place du Marché, Port Grimaud.

📅 Every Thursday and Sunday: 9 a.m. - 1 p.m.

➡ Specialised parking spaces at the entrance to Port-Grimaud 1, Avenue de la Mer. Possibility of a "mobiline" (an electric buggy) available for people with walking difficulties, on request at the security post at the entrance to Port Grimaud 1.

In a wheelchair, the presence of a companion to access the lakeside town is advisable, because of the presence of slopes due to the Venetian bridges.

# Local produce and handicrafts



## Domaine du Val de Gilly

📍 Route du Val de Gilly

☎ +33 4 94 43 21 25 • ✉ [domaineduvaldegilly@sfr.fr](mailto:domaineduvaldegilly@sfr.fr)

💻 [www.domaineduvaldegilly.com](http://www.domaineduvaldegilly.com)

📅 Open year round • In season: 9 a.m. - 12 p.m., 3 p.m. - 7 p.m. Closed on Sundays and public holidays • In low season: 9:30 a.m. - 12 p.m., 2 p.m. - 6 p.m. Closed in the morning in January, February and March. Closed on Sundays and public holidays.

📍 Wine sales / wine cellar tours

➡ The wine estate is accessible, single-storey, large car parks for parking vehicles, the cellar is accessible to PRM for tastings. PRM-adapted toilets.

## Coopérative Les Vignerons de Grimaud

📍 36 Route des Oliviers

☎ +33 4 94 43 20 14

💻 [www.vigneronsdegrimaud.com](http://www.vigneronsdegrimaud.com)

📅 Open year round. • In season: Daily and on public holidays in July-August from 9 a.m. to 7 p.m. • In low season: Monday to Saturday from 9 a.m. to 12:30 p.m. and 2:30 p.m. to 6:30 p.m.

📍 Wine sales

➡ The shop has an access ramp at the entrance, no specific reserved parking spaces for PRM, but has many spaces in front of the entrance, no steps, PRM-adapted toilets, reception desk between 70 and 80 cm high.



# Restaurants - Snacks



## • In the village

### **Apopino Restaurant**

📍 Place des Pénitents

☎ +33 4 94 43 25 26 • 📧 [reservations@apopinorestaurant.com](mailto:reservations@apopinorestaurant.com)

📅 Open year round

📄 Contemporary Mediterranean cuisine based on quality produce.

➡ Wheelchair-accessible restaurant with assistance, PRM-reserved parking space nearby on Place des Pénitents, PRM-adapted toilets.

### **Bastide Blanche**

📍 18 Rond-Point de la Coopérative

☎ +33 4 94 81 50 24

📅 Open year round

📄 Sophisticated seasonal cuisine.

➡ Car park near the restaurant. No slope and steps to reach the building. PRM-adapted toilets.

### **Fleur de Sel**

📍 4, place du Cros

☎ +33 4 94 43 21 54 • 📧 [contact.fleurdesel@gmail.com](mailto:contact.fleurdesel@gmail.com)

💻 [www.fleurdesel-grimaud.com](http://www.fleurdesel-grimaud.com)

📅 Open from Easter to October at midday and in the evening.

Closed on Mondays/Saturdays at noon in the low season.

Open daily from June to September.

📄 Gastronomic Restaurant

➡ Access to the restaurant for the physically disabled without difficulty outside, single-storey premises. The interior of the restaurant is accessible with assistance: there is a small step at

the entrance. PMR-adapted toilets with a ramp, PRM parking space on the Place Neuve (70 m).

### **La Fontaine**

📍 611 Route Nationale

☎ + 33 9 84 31 41 88

💻 [www.lafontaine-grimaud.fr](http://www.lafontaine-grimaud.fr)

📅 Open year round

📍 Traditional Mediterranean cuisine

➡ Wheelchair accessible with assistance. PRM-reserved parking spaces available at the Terrasses de Grimaud underground car park. Paid parking from April to the end of September, free for PRM with reduced mobility sticker on the windscreen. PMR-specific toilets, access to the building with no obstacles.

### **Le Clem's & Le Ptit Clem's**

📍 3 Boulevard des Micocouliers

☎ +33 4 94 43 20 19 • 📧 [leclems83310@gmail.com](mailto:leclems83310@gmail.com)

📅 Open year round, at noon every day. In the evenings from April to late October, Friday and Saturday evenings from November to March.

📍 Brewery, mussels, oysters - Snacks, pizza, ice cream

➡ Restaurant and snack bar accessible to PRM, access inside and outside, PRM-accessible toilets in the restaurant, PRM parking spaces less than 100 m on the Place Neuve.

## **• In Port Grimaud**

### **Café de la Plage**

📍 3 Place des 6 canons

☎ +33 4 89 25 54 60 • 📧 [luckysainttropez@gmail.com](mailto:luckysainttropez@gmail.com)

📅 Open from May to September

📍 Coffee, Sandwiches, ice cream

➡ Outdoor terrace on one level, the premises is to disability standards. Has a specific parking space nearby (50 m), PRM-adapted toilets.

## **La Licorne**

📍 4 Place du Marché

☎ +33 4 94 56 21 03

📅 Open from March to October

📍 Traditional and seasonal cuisine

➡ Accessible to PRM restaurant on one level, ramp at the entrance of the restaurant made for wheelchairs, PRM-adapted toilets, PRM parking spaces at 150 m on the large car park of Port Grimaud 1, tables at a height suitable for wheelchairs.

## **Le Monroe's Brasserie**

📍 Les Jardins de la Mer

☎ +33 4 94 56 44 11

🌐 [www.monroespub.fr](http://www.monroespub.fr)

📍 Traditional cuisine

➡ PRM specific parking spaces available less than 20 m from the restaurant. Access to the building without obstacles. PMR-specific toilets.

## **Le Relais des Coches**

📍 2 Place du Marché

☎ +33 4 94 56 24 04

📅 From February to October. Open daily.

📍 Brasserie cuisine: Pizza - Crêpes – ice creams

➡ The restaurant is accessible to PRM, single-storey restaurant, PRM-adapted toilets, PRM parking spaces in the Port-Grimaud 1 car park.

## **Pizza Italia**

📍 1 Avenue de la Mer - Les Vitrines du Soleil

☎ + 33 4 94 96 16 16 • 📧 [pizzaitaliaportgrimaud@gmail.com](mailto:pizzaitaliaportgrimaud@gmail.com)

💻 [www.pizzaitaliaportgrimaud.net](http://www.pizzaitaliaportgrimaud.net)

📅 Open from February to October

📍 Pizzeria

➡ PRM specific parking spaces available within 20 m of the restaurant. Access to the building without any obstacle. PRM-specific toilets.

### • **Beach and country side**

## **La Brasserie du Camping des Mûres**

📍 2721 Route du Littoral – Camping des Mûres

☎ + 33 4 94 56 16 97

📅 Open from April to October

📍 Mediterranean Cuisine

➡ Even flooring with no obstacles, PRM-reserved parking spaces available less than 100 m from the restaurant, PMR specific toilets available in the campsite, close to the restaurant.

## **La Table de Didier**

📍 1651 Route du Littoral

☎ +33 4 94 49 58 31 • 📧 [latablededidier@orange.fr](mailto:latablededidier@orange.fr)

💻 <https://restaurant-tablededidier.fr/>

📅 Open year round

📍 Traditional and Provençal cuisine

➡ PRM-specific parking spaces available at the Saint-Pons Les Mûres car park less than 100 m from the restaurant. PRM-specific toilets, access to the building with no obstacles.



## La Table des Oliviers

📍 Route des Blaquières - Golf Up

☎ +33 4 94 43 14 00 • 📧 [latable@leclousdesoliviersgrimaud.fr](mailto:latable@leclousdesoliviersgrimaud.fr)

📅 Open year round

📍 Traditional and Provençal cuisine

➡️ PMR specific parking spaces available at the golf club car park. Access ramp available at the entrance of the restaurant, step-free threshold, lift giving access to the different levels of the building, accessible tables for wheelchairs, PRM-specific toilets, PRM-adapted reception desks.

## Le Restaurant du Golfe de Grimaud

📍 1482 Route de Collobrières - Camping de Charlemagne

☎ +33 4 94 43 22 90 • 📧 [infos@camping-charlemagne.com](mailto:infos@camping-charlemagne.com)

💻 [www.camping-charlemagne.com](http://www.camping-charlemagne.com)

📅 Open from late June to late August. Morning, noon and evening, daily

📍 Traditional cuisine

➡️ PRM specific parking spaces available less than 20 m from the restaurant. Restaurant accessible to PRM, absence of steps, PRM-friendly toilets and specific parking spaces near the restaurant.

## Restaurant Les Naïades

📍 655 Chemin des Mûres - Camping des Naïades

☎ +33 9 50 90 29 88

📅 Open from June to September

➡️ PRM specific parking spaces within 20 m of the restaurant. Access to the building without any obstacle. Height under table  $\geq 70$  cm width  $\geq 77$  cm. Absence of steps. PRM-specific toilets.

## Restaurant La Plage

📍 2226 Route du Littoral - Camping de la Plage

☎ +33 9 52 38 73 07

💻 [www.restaurant-de-la-plage.com](http://www.restaurant-de-la-plage.com)

📅 Open from April to mid-October, at noon and in the evening

📍 Pizza, snack

➡ Restaurant with an access ramp at the entrance, PRM-friendly campsite toilets nearby, PRM parking spaces at the campsite entrance.

## Restaurant le Saint – Pons

📍 2226 Route du Littoral

☎ 04 94 82 86 62

📅 Open all year round

📍 Traditional cuisine and pizzas

➡ Wheelchair accessible in autonomy|WC + grab bar + circulation space

## Restaurant Le Sun

📍 1910 Route du Littoral - Camping Les Prairies de La Mer

☎ 06 60 63 44 48 • 📧 [managers@dsonevacances.com](mailto:managers@dsonevacances.com)

💻 [www.restaurant-le-sun.com](http://www.restaurant-le-sun.com)

📅 Open from April to mid-October, lunch and dinner

📍 Mediterranean cuisine

➡ Independently wheelchair accessible|Regular rolling and barrier-free floor|WC + grab bar + circulation space

## Restaurant Les Pieds dans l'eau

📍 1910 Route du Littoral - Camping Les Prairies de La Mer

☎ 00 33 7 77 99 75 50

📧 [managers@dsonevacances.com](mailto:managers@dsonevacances.com)

📅 Open from April to mid-October, breakfast, lunch and dinner

📍 Brasserie, snacking.

➡ Regular rolling and barrier-free floor; Height under table  $\geq 70$  cm, width  $\geq 77$  cm; No steps; WC + grab bar + circulation space; Site, building fully accessible; PRM accessible camping toilets close to the

restaurant.

- **Bakeries and pastry shops**

### **Iris et Pierre**

📍 Chemin de la Rine

☎ +33 4 94 56 02 63

📅 Open year round

📍 Bakery / Snack bar

➡ Bakery / Snack bar in compliance with disability standards, easy access to the shop and the bakery, no steps, specific parking space in front of the shop, toilets adapted for PRM.

### **Le Pâtissier du Château**

📍 19, boulevard des Aliziers

☎ + 33 4 94 43 21 16 • 📧 [olivier@etchart.eu](mailto:olivier@etchart.eu)

🌐 [www.patisserieduchateau.com](http://www.patisserieduchateau.com)

📅 Open year round. Daily from 7 a.m. To 7 p.m. Closed on Wednesdays.

📍 Tea room

➡ Accessible to PRM indoors and outdoors, no steps, specific parking spaces nearby (Place Neuve).

### **La Grimaudoise**

📍 30 Place des Artisans

☎ +33 4 94 56 08 94

🌐 [www.lagrimaudoise.fr](http://www.lagrimaudoise.fr)

📅 Open from March to November

📍 Grocery store, bakery, wine cellar, restaurant, tea room, receptions

➡ Street level access to the restaurant and PRM-friendly toilets.

# Hotels



## **SOWELL HÔTELS SAINT-TROPEZ** ★★★★★

📍 RD 559 - Saint-Pons-les-Mûres

☎ +33 4 94 79 39 39 / +33 8 26 30 01 23

✉ [soleildesainttropez@sowell.fr](mailto:soleildesainttropez@sowell.fr)

🌐 [www.sowell.fr](http://www.sowell.fr)

📅 Open from March to November

➡ Hotel with 4 rooms equipped for PRM, the hotel lift is to standards.

## **LE SUFFREN** ★★★★★

📍 16, Place du Marché - Port Grimaud 1

☎ +33 4 94 55 15 05 • ✉ [contact@hotel-suffren.com](mailto:contact@hotel-suffren.com)

🌐 [www.hotel-suffren.com](http://www.hotel-suffren.com)

📅 Open from March to November

➡ 1 bedroom equipped for PRM on the ground floor. A specific parking space is allocated on the Place du Marché (Market Square) in front of the hotel, for guests.

## **LE VERGER MAELVI** ★★★★★

📍 1115 Route de Collobrières

☎ +33 4 94 55 57 80 • ✉ [levergergrimaud@gmail.com](mailto:levergergrimaud@gmail.com)

🌐 [www.levergermaelvi.com](http://www.levergermaelvi.com)

📅 Open from April to November

➡ There is a bedroom specially equipped for people with reduced mobility.



## **VILLA LES ROSIERS** ★★★★★

📍 94 Chemin de Guerrevieille

☎ +334 94 55 55 20 • 📧 [villalesrosiers@gmail.com](mailto:villalesrosiers@gmail.com)

💻 [www.villalesrosiers.fr](http://www.villalesrosiers.fr)

📅 Open year round, annual closure in November.

➡ 1 bedroom adapted for PRM, has a path to access the pool, PRM-friendly toilets.

## **ATHENOPOLIS** ★★★

📍 2750 Route de la Garde-Freinet

☎ +33 4 98 12 66 44 • 📧 [hotel@athenopolis.com](mailto:hotel@athenopolis.com)

💻 [www.athenopolis.com](http://www.athenopolis.com)

📅 Open from April to October

➡ 1 bedroom suitable for PRM.

## **LA VILLA DES ANGES** ★★★

📍 RD 559 - Guerrevieille

☎ +33 4 94 96 29 10 • 📧 [villadesanges@orange.fr](mailto:villadesanges@orange.fr)

💻 [www.hotelvilladesanges.fr](http://www.hotelvilladesanges.fr)

📅 Open year round

➡ 1 bedroom equipped for PRM, on the ground floor, at garden level, with adapted toilets. A lift or goods lift is set up in the hotel to access the reception.

# Tourist residences



## **GARDEN & CITY GRIMAUD ★★★**

📍 606 Route de Collobrières

☎ +33 4 65 65 64 07 • ✉ [grimaud@garden-city.fr](mailto:grimaud@garden-city.fr)

💻 [www.garden-city.fr](http://www.garden-city.fr)

📅 Open year round

➡ 2 apartments suitable for PRM.

## **PIERRE & VACANCES - LES PARCS DE GRIMAUD ★★★**

📍 Les Parcs de Grimaud - 522 Chemin des Mûres

☎ +33 4 94 79 00 00 • ✉ [reception.grimaud@groupepvcp.com](mailto:reception.grimaud@groupepvcp.com)

💻 [www.pierreetvacances.com](http://www.pierreetvacances.com)

📅 Open from late March to early November

➡ The Pierre et Vacances Les Parcs de Grimaud residence has 3 studios equipped for people with reduced mobility.

Doorways are adapted for wheelchair access.

The bathroom is equipped with a low toilet with handrail, a bathtub with handrail also and a washbasin.

The surface area of these apartments is around 27 m<sup>2</sup>.

# Campsites



## LES PRAIRIES DE LA MER ★★★★★

📍 1910 Route du Littoral

☎ +33 4 94 79 09 09 • ✉ [prairies@riviera-villages.com](mailto:prairies@riviera-villages.com)

💻 [www.riviera-villages.com](http://www.riviera-villages.com)

📅 Open from April to October

➡ On one level, this site is fully equipped so that PRM can move with ease, specific toilets set up in the sanitary facilities, it also has mobile homes specially designed for PRM.

➡ A specialist tour operator is also onsite:

### **Service d'Aide Côte d'Azur**

Contact: Karine Van Iersel

☎ +33 4 94 81 61 50 • ✉ [info@hd-cote-d-azur.com](mailto:info@hd-cote-d-azur.com)

💻 [www.hd-cote-d-azur.com/fr/servicedaide](http://www.hd-cote-d-azur.com/fr/servicedaide)

## LA PINÈDE ★★★★★

📍 1968 Route de Sainte-Maxime

☎ +33 4 94 56 04 36 • ✉ [la-pinede@capfun.com](mailto:la-pinede@capfun.com)

💻 [www.capfun.com](http://www.capfun.com)

📅 Open year round

➡ La Pinède campsite has put in place the necessary arrangements to accommodate people with physical disabilities: A suitable mobile home is available. The reception, pool, showers, restaurant, playground, gym, spa, supermarket are accessible. Specific parking spaces at the campsite entrance.

## **LE DOMAINE DES NAÏADES ★★★★★**

📍 655 Chemin des Mûres

☎ +33 4 94 55 67 80 • 📧 [info@lesnaiades.com](mailto:info@lesnaiades.com)

💻 [www.lesnaiades.com](http://www.lesnaiades.com)

📅 Open from April to the end of September

➡ Campsite with 1 mobile home specially equipped for persons with reduced mobility, swimming pool with a ramp, reception desk on one level, small supermarket also accessible.

## **LE CAMPING DE LA PLAGE ★★★**

📍 2226 Route du Littoral

☎ +33 4 94 56 31 15 • 📧 [campingplagegrimaud@wanadoo.fr](mailto:campingplagegrimaud@wanadoo.fr)

💻 [www.camping-de-la-plage.fr](http://www.camping-de-la-plage.fr)

📅 Open from April to October

➡ The campsite provides: a dedicated parking space, an access ramp to the reception, a reception desk, 3 specific modules of sanitary facilities for the disabled, access ramps for the restaurant and the grocery store.

➡ Most of the campsite pitches are accessible because they are at ground level.







Office Municipal de Tourisme et d'Animation Culturelle de Grimaud  
679 Route Nationale - (F) 83310 Grimaud - T +33 494 55 43 83 - F +33 494 55 72 20  
[info@grimaud-provence.com](mailto:info@grimaud-provence.com) - [www.grimaud-provence.com](http://www.grimaud-provence.com)

SIRET 799 744 156 00016